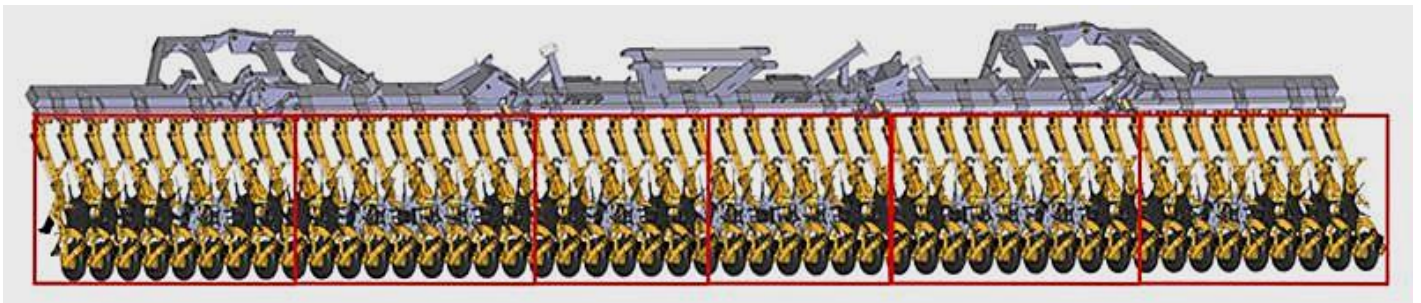
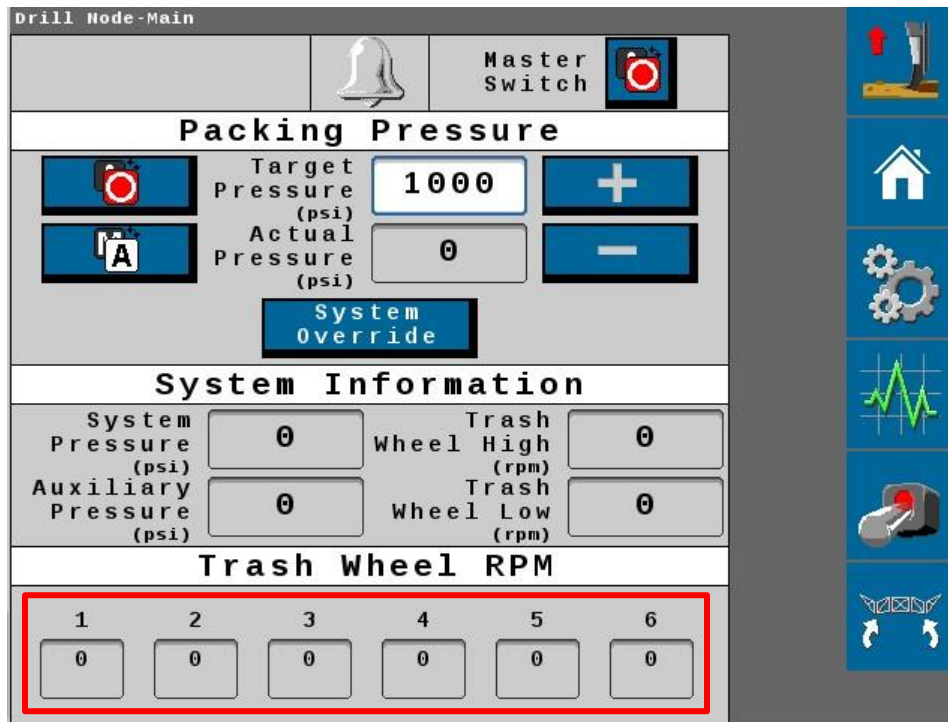


ULTRA SR DCM & RCM SOFTWARE UPDATES

ULTRA SR DCM UPDATE – MANDATORY

The Ultra SR Residue Management System is now organized into 6 sections. This has been accomplished by separating the center section which increases the maneuverability of the implement. Each of the Residue Wheel sections have their own RPM sensor that recognizes if the Residue Wheels are turning.

As a result, the DCM Software requires an update to accommodate the 6th RPM sensor. The required **22.4.2.1** software version and installation instructions are available for download on both the [SeedMaster Website](#) and [Dealer Portal](#).



ULTRA SR RCM UPDATE – MANDATORY

SeedMaster has worked to refine the RCM settings for the Ultra SR improving the default PWM and Valve Responses. The default PID values have also changed, which necessitates an update to software version **23.4.1.1**. The software and instructions are available for download on both the [SeedMaster Website](#) and [Dealer Portal](#). The improvements enhance the ability to handle the different physical properties of multiple products while maintaining smooth, precise metering. After the software has been updated, the Ultra SR RCM Profile must be removed and rebuilt to apply the new default settings. Please note that your product and scale calibration values will be deleted when the profile is removed. Record any settings you wish to keep.

1. From the main RCM work screen, touch the settings softkey.
2. In “Application Settings”, touch the “Remove” button.



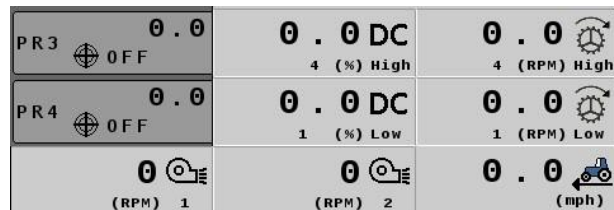
3. This will send you to a pop-up asking to confirm the profile deletion. Touch the checkmark.
4. You will be returned to the “Select Profile” screen with “New Profile” defaulted into the drop-down. Touch the checkmark.



5. This will initiate the Profile Set Up process. Please utilize either the 2024 Ultra SR Operator's Manual following the “Granular Product Control Setup” wizard, or the set-up video available on YouTube.



6. When the profile is complete, you will be returned to the System Settings tab. From here, you will need to set up the main work screen. Touch “Display Setup Menu”.



7. Using the picture to the right, set up the main work screen with the appropriate read outs.

8. Before the Ultra SR is ready for the field, please confirm the default settings have changed as per the images below. You will also be required to re-calibrate your scales. Please utilize your model year's Operator's Manual following the “Scale Calibration” procedure.

