

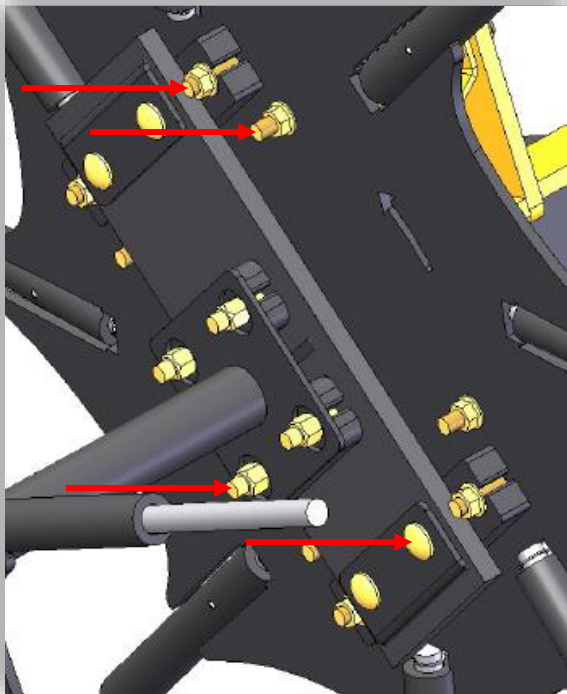
ULTRA SR PRODUCT NOTICE

RESIDUE WHEEL FLEX COUPLING

Maintenance of the Residue Management System is important to ensure proper operation season to season. This system is designed to pull residue through the Ultra SR openers. Since the Residue Management System is ground engaging and rotating with the forward speed of the drill, it can collect debris from the field (ie. twine, rocks, wire etc.).

The Flex Couplings are a wearable, fix on failure component of the Ultra SR. If replacement is required, it is important that they are installed with the correct orientation. The Flex Coupling uses 4 ply belting that provides both flexibility and durability. The belt stitching is offset from the center of the cross section of the belt. They need to be installed with the belt stitching facing the end plate and NOT the shaft. Fasteners should be torqued and secured to a maximum of 40 ft-lbs. A good visual inspection for this torque would be to ensure there is one thread showing on the bolt. Please see the image below.

The system should be checked after initial use to ensure that all fasteners retaining the links and flex couplings between the residue wheels are properly torqued and secured to a maximum of 40 ft-lbs. Following this initial inspection, the system should be checked every 50 hours for fastener torque. Debris removal from the wheels, couplings, and other rotating areas should occur after every tank fill. These inspections will help limit wear, damage, and increase the durability of the system.



Machines within the factory warranty period may submit an invoice for parts and labor coverage to warranty@seedmaster.ca following replacement. If there are any questions, please direct them to smsservice@seedmaster.ca.